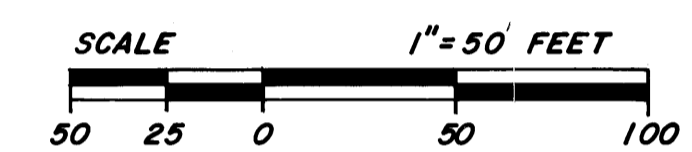
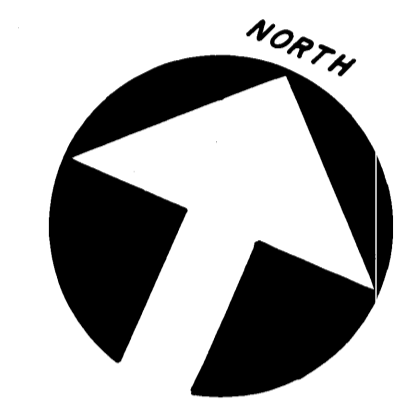
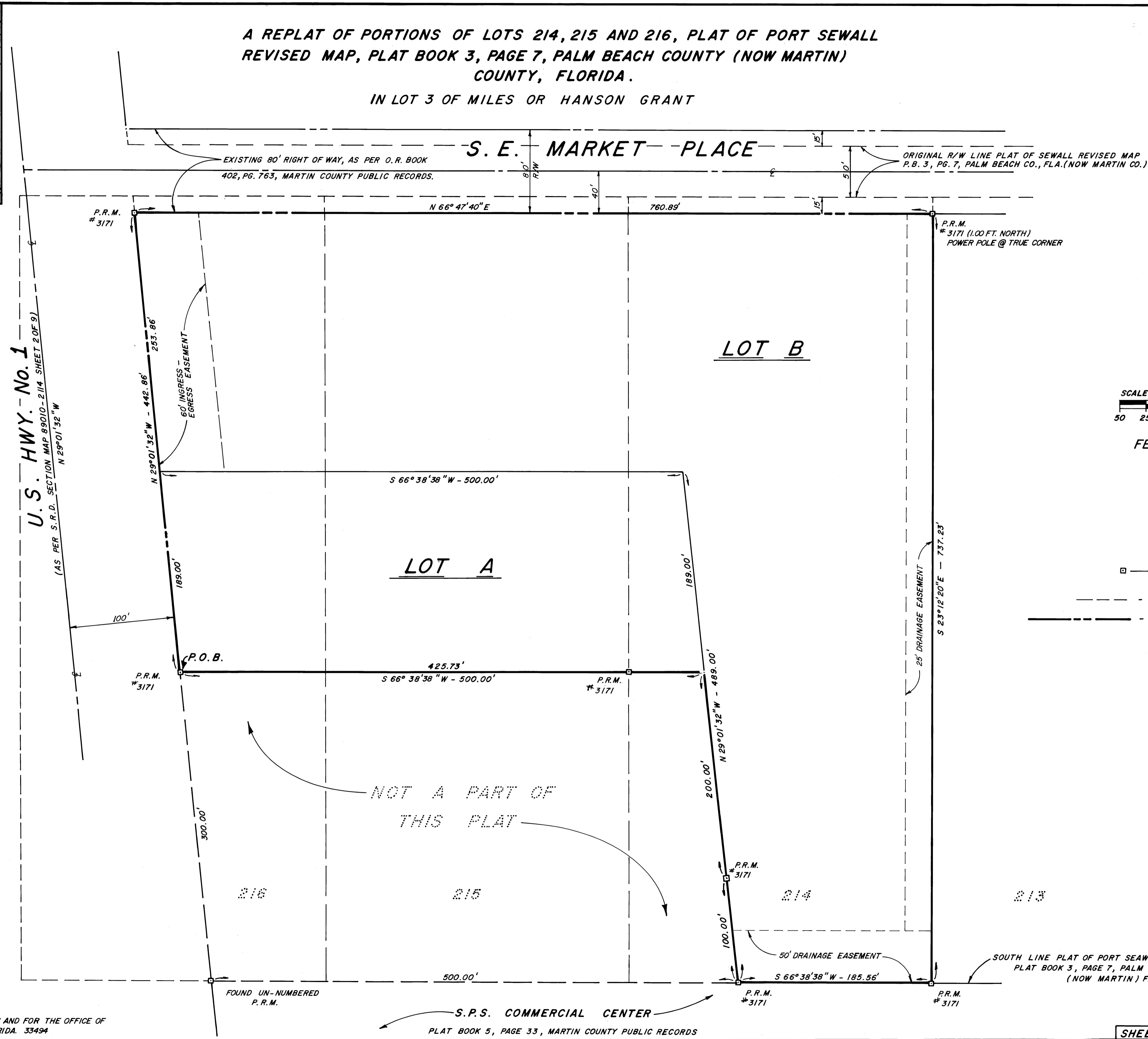
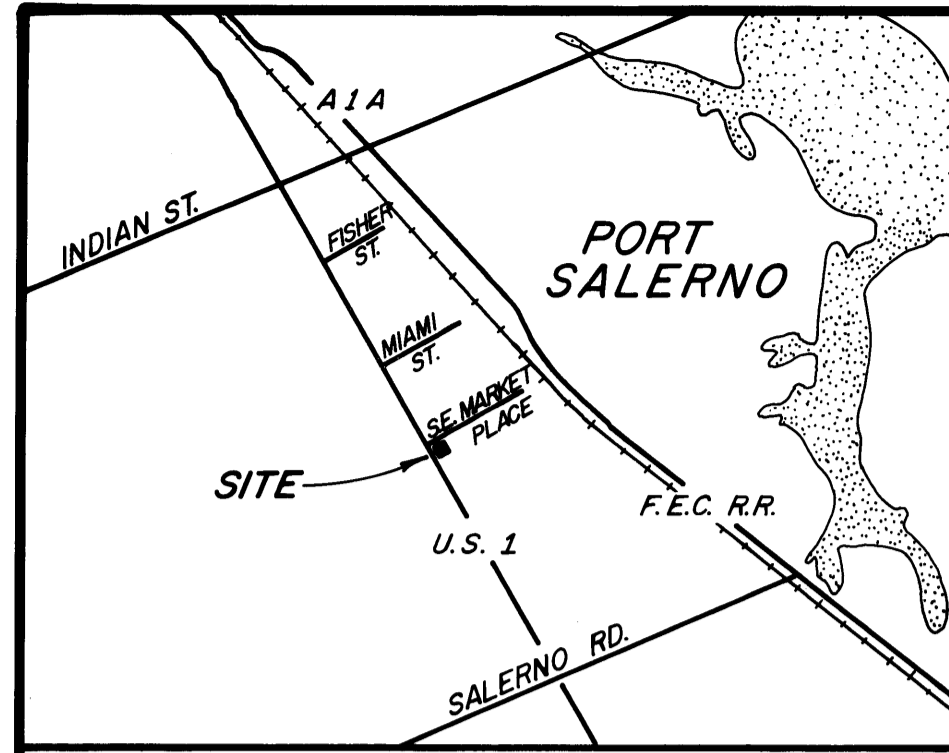


A REPLAT OF PORTIONS OF LOTS 214, 215 AND 216, PLAT OF PORT SEWALL
 REVISED MAP, PLAT BOOK 3, PAGE 7, PALM BEACH COUNTY (NOW MARTIN)
 COUNTY, FLORIDA.
 IN LOT 3 OF MILES OR HANSON GRANT



FEBRUARY 1982

SURVEYOR'S NOTES

- — DENOTES 4" x 4" x 36" CONCRETE MONUMENT W/ BRASS DISK STAMPED P.R.M. #3171
 - - - - DENOTES ORIGINAL LOT LINE OR EASEMENT LINE
 - - - - DENOTES RIGHT OF WAY LINE
- BEARINGS SHOWN HEREON ARE RELATIVE TO THE WEST LINE OF S. P. S. COMMERCIAL CENTER PLAT BOOK 5, PAGE 33, MARTIN COUNTY, PUBLIC RECORDS.

NOT A PART OF THIS PLAT

THIS INSTRUMENT WAS PREPARED BY ROBERT M. WATFORD IN AND FOR THE OFFICE OF MATHERS & ASSOCIATES, 295 FLORIDA STREET, STUART, FLORIDA. 33494

S.P.S. COMMERCIAL CENTER
 PLAT BOOK 5, PAGE 33, MARTIN COUNTY PUBLIC RECORDS

SOUTH LINE PLAT OF PORT SEAWALL REVISED MAP
 PLAT BOOK 3, PAGE 7, PALM BEACH COUNTY
 (NOW MARTIN) FLA.